



## Personal budgets and the Education, Health and Care assessment & planning process

In Control Residential Workshop for Children's Services – 1<sup>st</sup> July 2014

Meera Craston and Rhian Spivack

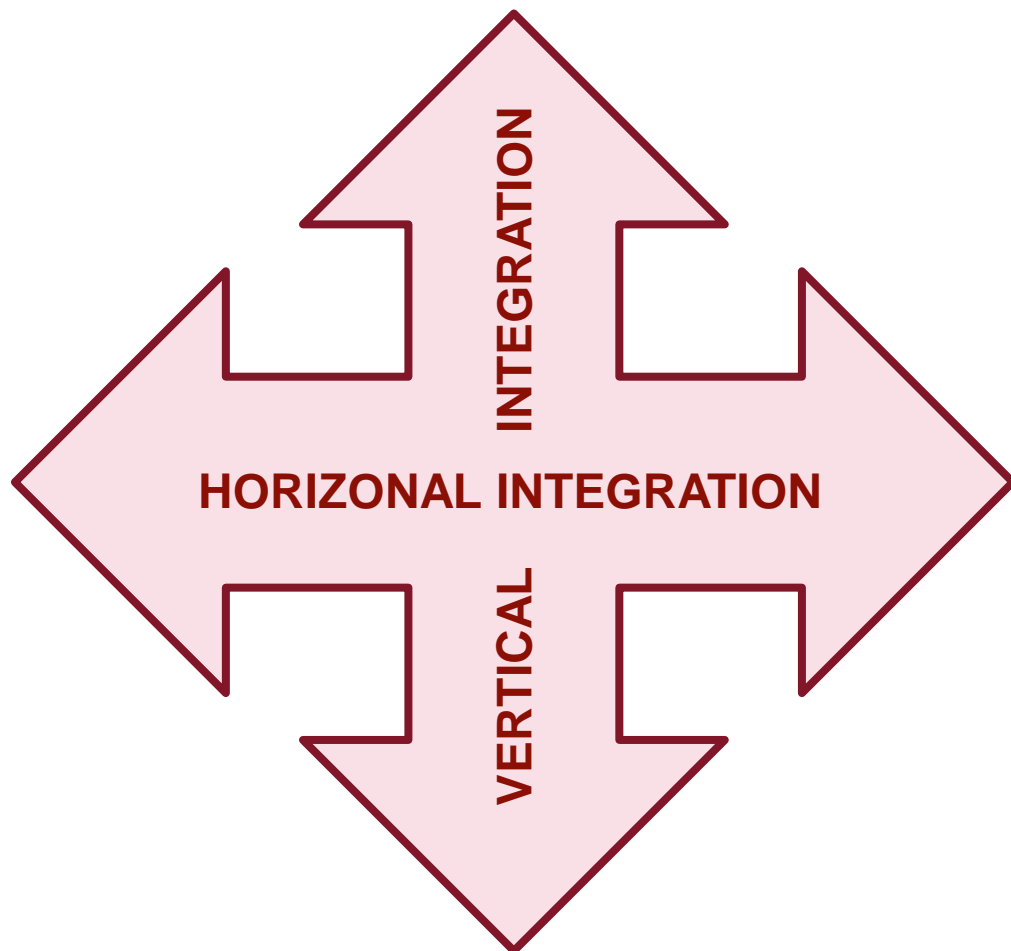
# Introduction

---

- Previous England-based SQW research has included
  - Progress made by DfE Individual Budget Pilots (2009-2012)
  - Initial Personal Budget developments of the SEN&D Pathfinders, SEN DP Pilots and assessment of readiness of pathfinder/non pathfinder areas across England to meet the SEN&D reforms (2011 to 2013)
- Research has shown
  - Strong progress developing/delivering social care PBs for adults and children & young people
  - Mixed progress in relation to health and SEN PBs
  - Development of PBs is complex, takes time and requires dedicated resource
  - More often different forms of PBs developed in silo
- However, SEN&D reforms present a changed landscape for PBs, including need to consider
  - How to bring together different types of PBs into an integrated PB
  - How to align and integrate PBs into wider resourcing decisions in relation to joint commissioning and those that take place during the development of EHC plans
- Starting thematic work to explore process-related progress made in relation to PBs and integrated resourcing of the EHC plans
  - Would like your help to inform this work...

# Two types of integration to consider...

---



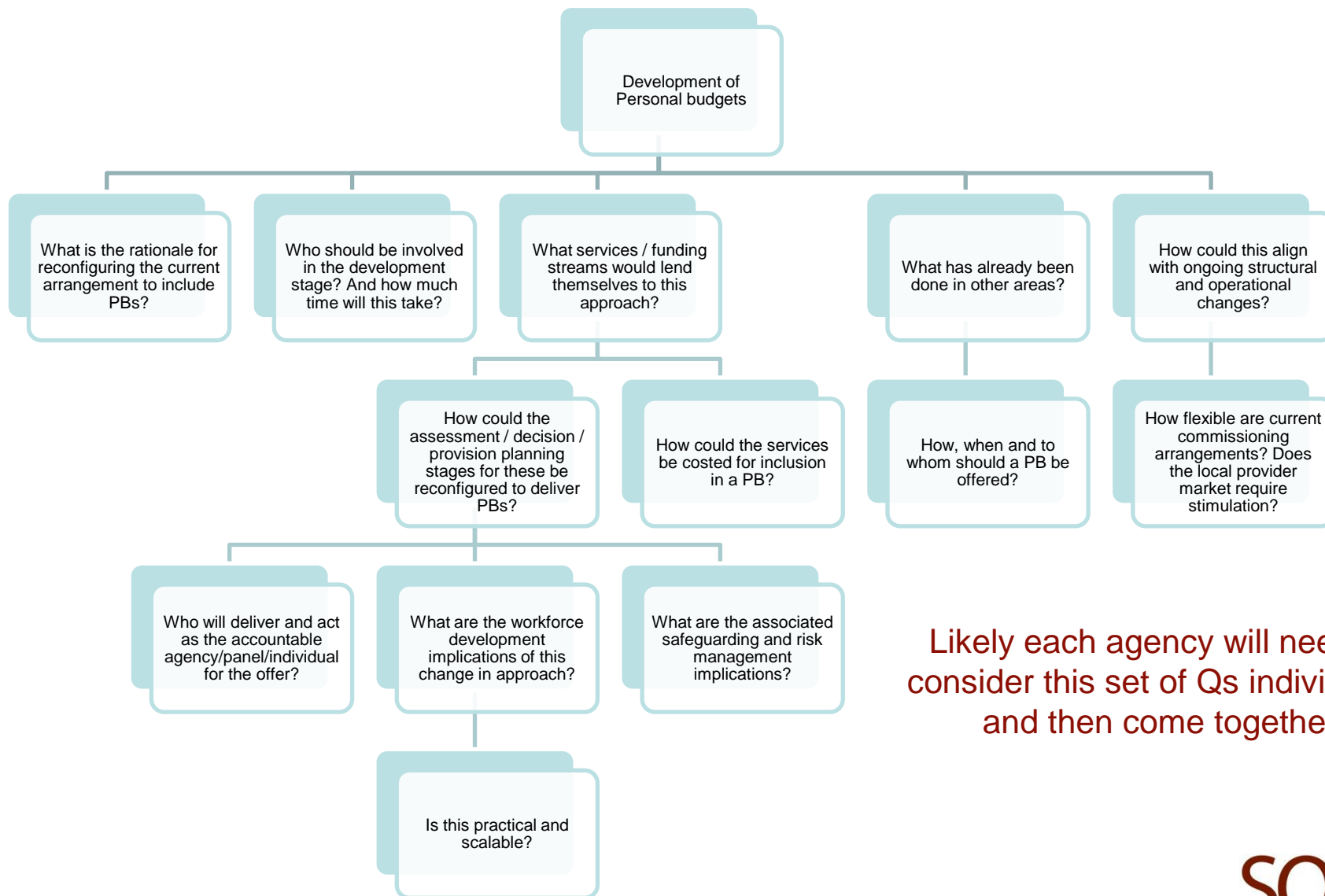
## Horizontal integration...

Across different types of PBs

## Vertical integration...

Into the EHC assessment and planning process

# Key initial considerations to inform the development of PBs...



Likely each agency will need to consider this set of Qs individually and then come together

# Integrating different types of PBs

---

How many areas have or are working to integrate PBs?

What are the merits of bringing together different PBs?

## Opportunities

Each type of PB underpinned by a similar process

Personalised and outcome focused nature common across the piece

Desired outcomes across SEN, social care and health not mutually exclusive

Types of support accessed not mutually exclusive

## Challenges

Differing governance and accountability structures

Differing eligibility criteria

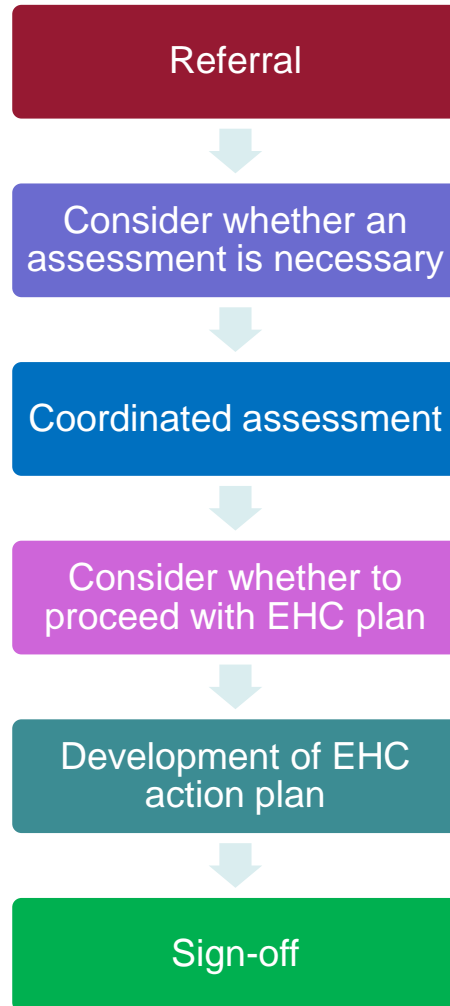
Differing funding arrangements

Front-line multi-agency delivery

Any more to add to our initial list/Anyone addressed the challenges?

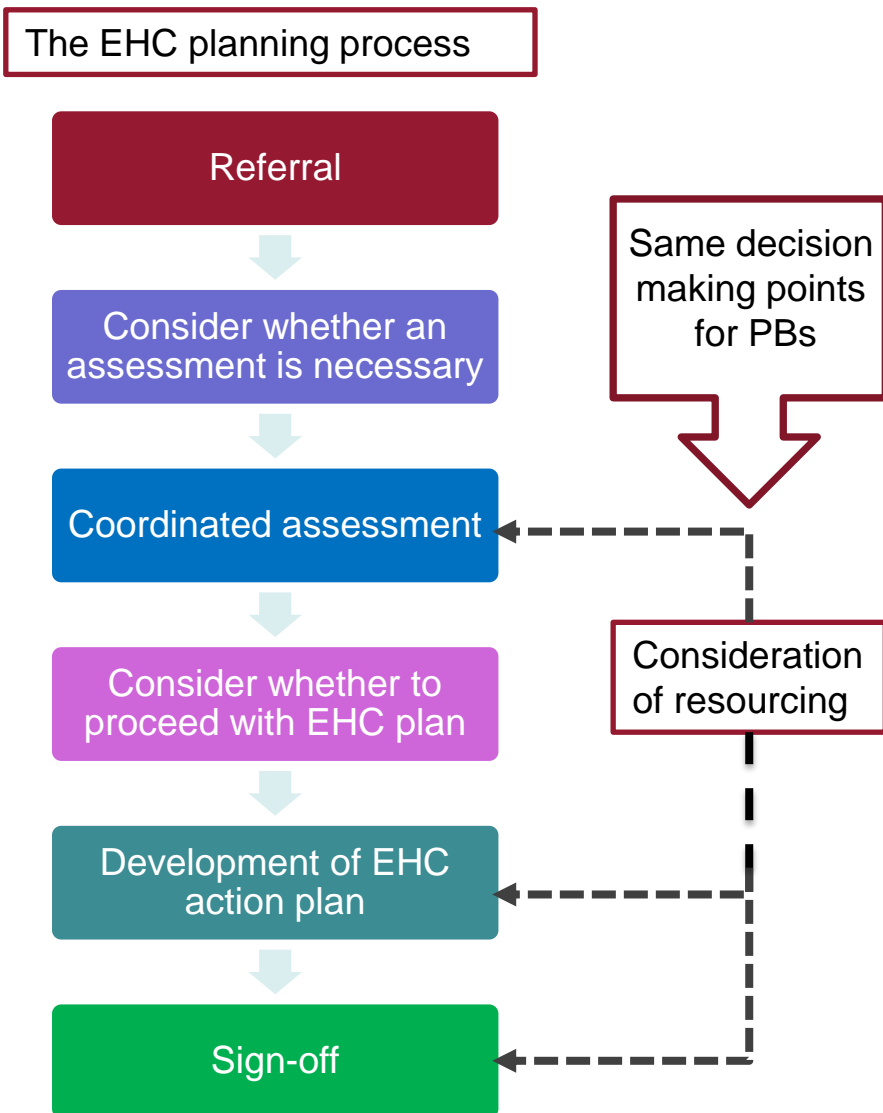
# The EHC assessment and planning process

---



- Similar stages and sequencing for development of PBs
- Similar opportunities and challenges (as per previous slide) faced when developing the EHC assessment and planning process
- How and at what stages should PBs be integrated into this process?

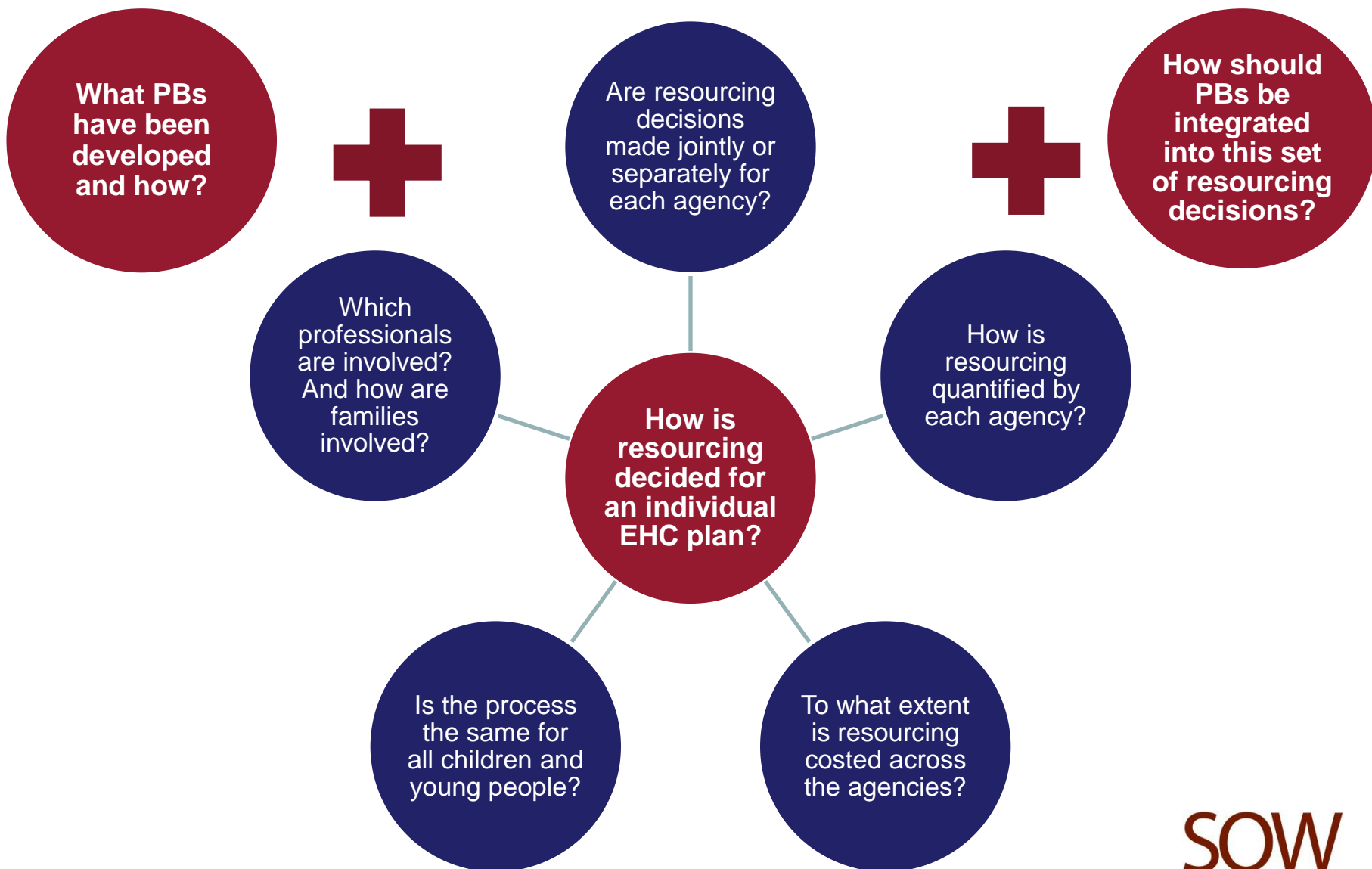
# Resourcing of EHC plans and integration of PBs...



- At what stages in the EHC assessment and planning process should resourcing be considered?
- Which professionals should be involved in this decision making process and how?
- How should families be involved?

So...need now need to consider the detail around how to embed PB process into the wider EHC process

# So, what next?





## Next steps...

---

- Undertaking research with 4 pathfinder and 4 non-pathfinder areas over course of July 2014
  - Pathfinders – Wigan, West Sussex, Southampton, Trafford
  - Non-pathfinders – Cambridgeshire, Essex, Gloucestershire, Newcastle
- Draft thematic report due for submission to DfE end July 2014
- Likely publication of final report September 2014

# Contact

---

Meera Craston

Director

SQW

t. 020 7391 4112

e. [mcraston@sqw.co.uk](mailto:mcraston@sqw.co.uk)

w. [www.sqw.co.uk](http://www.sqw.co.uk)

Rhian Spivack

Senior Consultant

SQW

t. 020 7391 4108

e. [rspivack@sqw.co.uk](mailto:rspivack@sqw.co.uk)

w. [www.sqw.co.uk](http://www.sqw.co.uk)