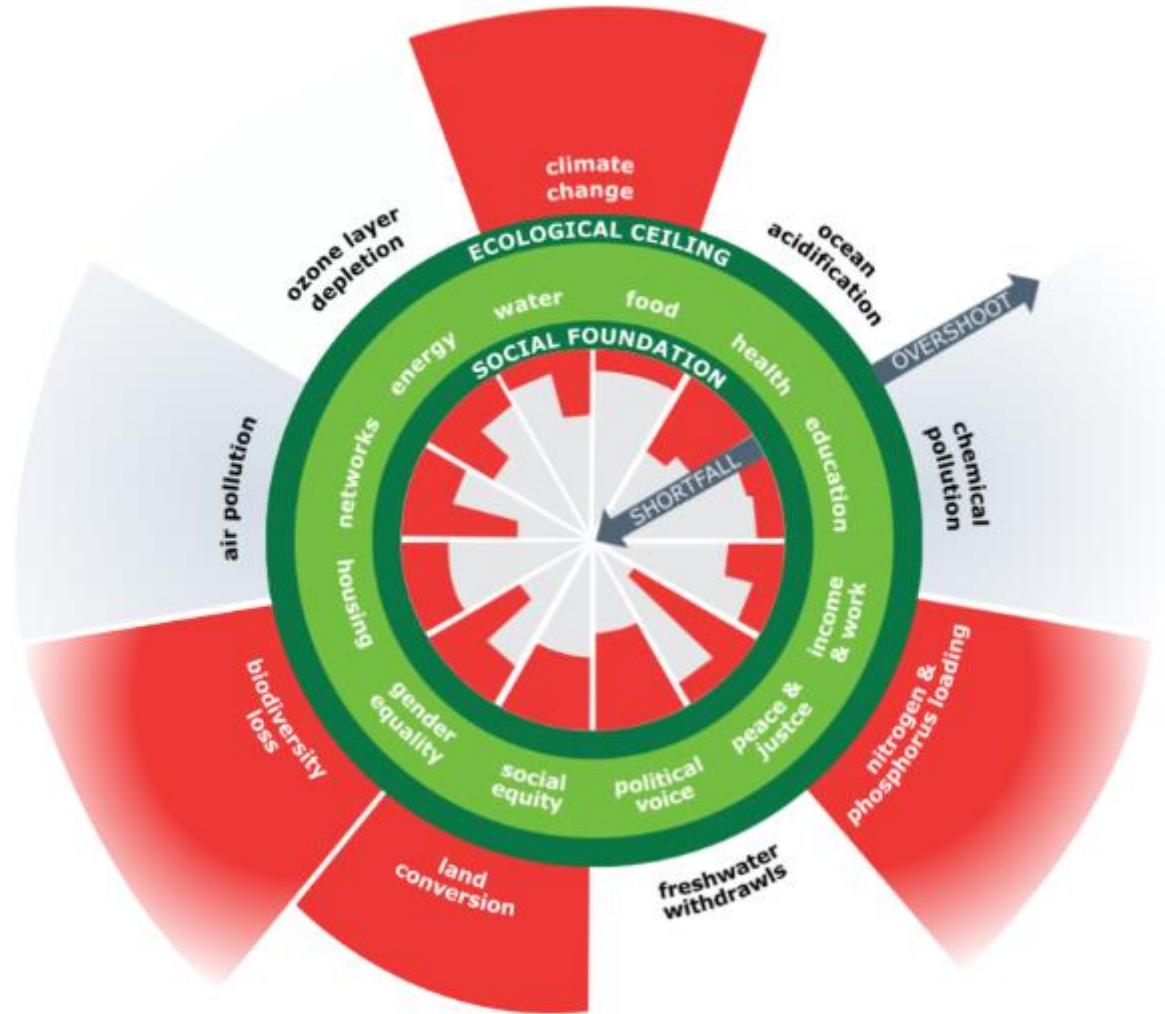
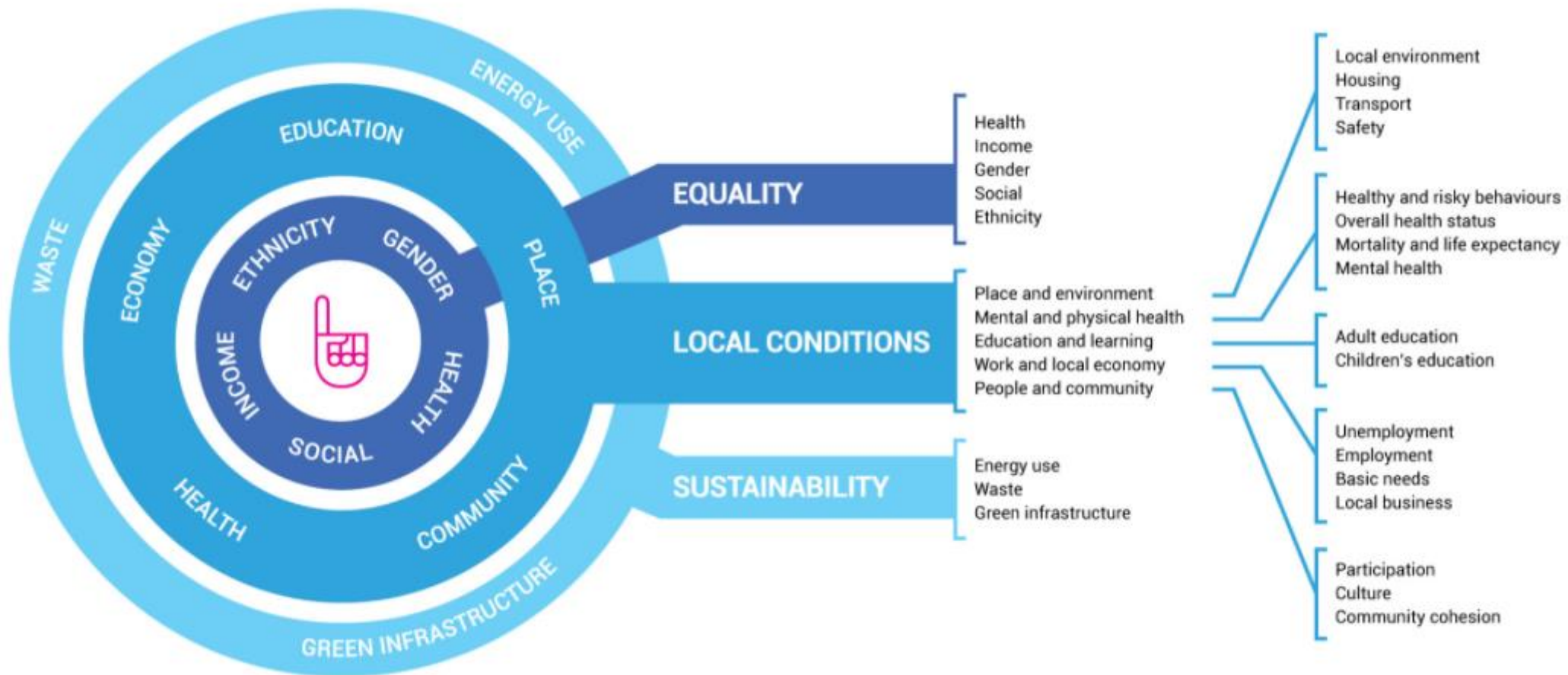


Social care & local economies



<https://www.kateraworth.com/doughnut>



<https://www.thrivingplacesindex.org/page/about/about-the-tpi>



What can local policy makers do?

1. Set a strategic objective to shift away from extractive providers and towards providers that create value for the community
2. Involve local people, particularly those who need care and support, in developing an approach
3. Be willing to take risks, work collaboratively and shift resources away from business as usual